

KONICA MINOLTA

# bizhub PRESS C8000

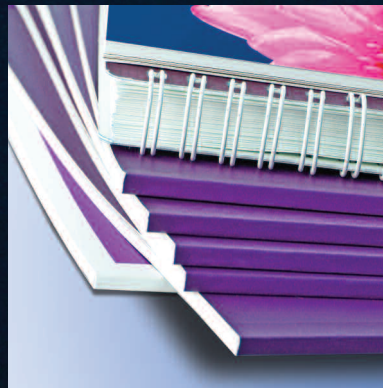
**STOP THE PRESSES:** ANNOUNCING A REVOLUTION IN COLOR PRINTING



COUNT ON KONICA MINOLTA  
bizhub PRESS C8000

## REVOLUTIONARY ADVANTAGES FOR HIGH-SPEED DIGITAL COLOR

WORLD-CLASS COLOR AT 80 PAGES PER MINUTE. DIGITAL PRODUCTIVITY THAT DOES AWAY WITH COSTLY, TIME-CONSUMING MAKE READY AND PRESS SETUP. COST-EFFECTIVE OUTPUT THAT MAKES COLOR AFFORDABLE FOR YOUR CLIENTS AND PROFITABLE FOR YOUR BUSINESS. THAT'S WHAT YOU CAN COUNT ON WITH THE BIZHUB PRESS C8000 – THE KONICA MINOLTA PROFESSIONAL THAT'S LEADING A REVOLUTION IN COLOR DIGITAL PRODUCTION PRINT.



### Up to 4800 high-quality color pages per hour.

At 80 color pages per minute, the bizhub PRESS C8000 will raise your print production to the productivity level of presses costing far more. But speed is only part of the story. Speed plus color quality, image stability and heavyweight throughput – that's a revolutionary combination of advantages to grow your business.

The bizhub PRESS C8000 is the color professional that commercial printers, print-for-pay facilities and corporate CRDs have been waiting for. It helps you meet tight deadlines by eliminating the need for special training and the complex setup, make-ready and plate-change operations required with offset printing. And its digital workflow can accommodate last-minute changes, web-to-print job ordering, variable data printing and cost-effective inline finishing.


The bizhub PRESS C8000 saves serious time and money – making high-quality color printing more affordable than ever before. Output is faster. Operation is simpler. Finishing is automatic. Reliability will keep you up and running. And color quality will keep your customers coming back for more.



**Eco Vision 2050** is Konica Minolta's commitment to protect the environment – saving energy, preserving resources, promoting recycling and reducing CO<sub>2</sub> emissions by 20% in 2015 – and ultimately by 80% in 2050, to help sustain the environment for generations to come. Please visit our website to learn more about our environmental initiatives and our exclusive **Clean Planet Program**.

[www.countonkonicaminolta.com](http://www.countonkonicaminolta.com)





### What can the bizhub PRESS C8000 do for your business?

If you're a commercial printer adapting to the realities of the digital era, you can count on the bizhub PRESS C8000 to get you where you want to go – breaking the cost barrier of legacy equipment while maintaining the color quality and throughput power that keeps you competitive.

For quick-printing locations, the bizhub PRESS C8000 offers cost-effective output, fast turnaround and simple on-board touch-screen control. And corporate CRDs, government printers and educational and healthcare applications will appreciate the wide range of paper handling, finishing options and color management tools that match the needs of any application.

Color presentations and reports. Corporate newsletters. Human resource documents. The bizhub PRESS C8000 does them all, even in small quantities that wouldn't be economical on offset equipment. But it also does high-quality color catalogs, sales materials, color billing inserts and direct-mail flyers with variable data. Lightweight package stock, heavy-stock postcards, business cards and more. Plus saddle-stitched booklets up to 200 pages – even perfect-bound books up to 600 pages, with color covers printed inline or added post-fusing.

### Count on Konica Minolta to lead the revolution.

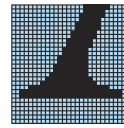
In today's highly competitive world, professionals need new ways to save money. Safeguard the environment. Offer innovative services. And respond to changing needs from corporate and commercial clients.

To protect the environment, we incorporate sophisticated green technologies in every product – lowering power consumption, offering energy-saving operating modes, producing high-yield toner bottles designed for easy recycling. We also reduce emissions, minimize pollutants and utilize recycled materials throughout our manufacturing.

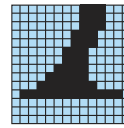
Konica Minolta has also been developing new technologies to meet 21st-century realities. Our bizhub PRO equipment has led the way in digital production speed, quality and cost-efficiency. In the bizhub PRESS C8000, we've taken the next dramatic step – and given you a true color professional that works faster, smarter and better.

With purpose-built equipment that stands up to the most rigorous output demands, we've proven our commitment to the production print industry. Once you see the bizhub PRESS C8000 in action, you'll understand how far we've come – and how valuable this revolutionary new digital press can be for your business.

**1200 DPI RESOLUTION:** greater image detail, finer lines, more legible characters – in both color and B&W, the bizhub PRESS C8000 goes far beyond the capabilities of conventional 600 DPI systems.



1200 DPI



600 DPI

**Optimized 1,200 dpi print resolution – and faster data processing.**

The bizhub PRESS C8000 offers 1,200 dpi print resolution, to reproduce the finest detail in both images and text. In close-up view, curved lines reveal less jaggedness – giving letters and graphics smooth, clean accuracy.

Advanced dot screen and FM screen technologies provide color images with greater realism, eliminating moiré and edge distortion. Outline processing is optimized to make color characters look thinner, and therefore, cleaner and tighter against white backgrounds and thicken the appearance of knock-out print characters against color. Some competitive systems don't offer independent outline processing for color characters.

**SUPERIOR COLOR IMAGES TO RIVAL OFFSET PRINTING**

IMAGE QUALITY THAT TAKES DIGITAL COLOR TO A WHOLE NEW LEVEL – THAT'S THE MOST IMPRESSIVE ADVANTAGE OF THE BIZHUB PRESS C8000.

A DIGITAL SOLUTION THAT PRODUCES BRILLIANT, VIVID COLOR IMAGES WITH RICHER TONES AND HIGHER RESOLUTION. IMAGES THAT GIVE YOU THE

COMMUNICATIONS POWER OF OFFSET PRESSES, AT FAR LESS COST.



**Color stability, from first print to 10,000th.**

For print professionals, color stability over the entire press run is one of the most sought-after benefits of any color printer. The bizhub PRESS C8000 is designed to maintain a stable color image, continuously and automatically – so first and final prints stand up to the closest side-by-side scrutiny.

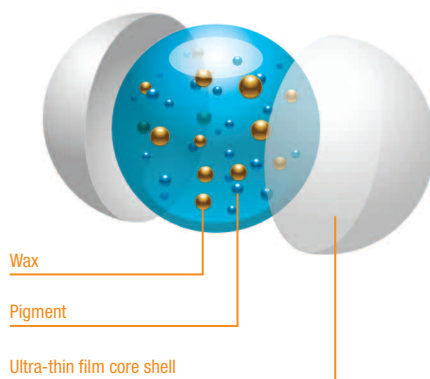
Konica Minolta's innovative Screen-Enhancing Active Digital Processing (S.E.A.D. II) system utilizes both Color Density Control (CDC) and Image Density Control (IDC) sensors to correct density without slowing print speed or affecting print performance.

During continuous printing, the IDC sensor reads patches of magenta, yellow, cyan and black to adjust maximum density levels and correct half-tone density automatically. The CDC sensor corrects color gradations according to the paper stock being used, providing smooth gradations in high density and skin-tone areas and maintaining the same gradation on different types of paper. Image stability is also maintained over time and on different machines, so large-scale operations can count on consistent output.

To achieve and maintain precise 1,200 dpi resolution, the bizhub PRESS C8000 incorporates an advanced aluminum die-cast laser unit that writes information more accurately and maintains density more evenly. Its color registration adjustment system can even calculate partial zoom errors. And its rigid construction is the state of the art in reliable, consistent performance – hour after hour, day after day, month after month.

**Simitri HD**

**Exclusive Simitri HD+ toner – now in its third generation.**



**SIMITRI HD+ TONER:** ultra-thin core shell allows toner particles to fuse more quickly.

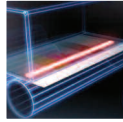
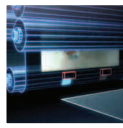
With the creation of Simitri® toner, Konica Minolta introduced the world's first polymerized toner particles – smaller, more uniform particles that are superior for reproducing fine detail.

New 3rd-generation Simitri HD+ toner continues our revolutionary leadership in toner formulation, incorporating an ultra-thin core shell structure that lowers its fusing temperature to allow faster print process speeds with increased image stability. That's a major benefit for production print jobs – especially ones that demand heavy paper stock.

Our new Simitri HD+ toner also achieves a smoother printed surface, creating spectacular high-impact image quality. It minimizes friction, making it the ideal color carrier for both thick and thin paper. And it utilizes biomass, an organic resource that reduces environmental impact compared to conventional toners.

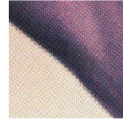


**OUTLINE CHARACTER PROCESSING:**  
Reproduces the ideal thicknesses of knock-out type on color backgrounds.



**IMAGE DENSITY CONTROL:** the IDC sensor corrects halftone density automatically during continuous printing. Offering improved image stability from start to finish.

**COLOR DENSITY CONTROL:** the CDC sensor reads printed color values to reproduce hues and skin tones more accurately.



**FM SCREENING:** the advanced Frequency Modulation screening process creates smoother images, free of moiré and jagged-edge distortion.

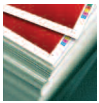


**SIMITRI HD+:** Unlike traditional pulverized toner (bottom), Simitri HD+ delivers high image quality characteristics and glossy appearance that rival offset printing.



## HIGH-VOLUME POWER FOR HEAVYWEIGHT COLOR OUTPUT

HANDLING THE RIGHT PAPER FOR EVERY COLOR PRINTING NEED. MAINTAINING PRECISE IMAGE POSITION THROUGH LONG PRESS RUNS. KEEPING HEAVY AND COATED STOCK RUNNING SMOOTHLY FROM FIRST SHEET TO FINAL FOLD. USING NEW AND INNOVATIVE KONICA MINOLTA TECHNOLOGY TO ACHIEVE THESE GOALS, THE BIZHUB PRESS C8000 IS A TRUE HEAVYWEIGHT – A WORKHORSE YOU CAN COUNT ON TO MEET YOUR PROFESSIONAL GOALS AND EXCEED YOUR EXPECTATIONS.



### **80 ppm color output:**

up to 4800 full-color pages per hour, with 500,000-impression monthly duty cycle to handle the heaviest production demands.



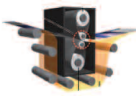
### **15-inch color LCD touch-panel display:**

can be placed anywhere on the unit for on-board document preview/review, making post-RIP editing and document file management quick and simple.



### **3rd-Generation Simitri HD+ Toner:**

for smaller, more uniform toner particles for spectacular color imaging with superior fine detail.



### **Productive dual fusing:**

a system for offset-quality images without time-consuming and revenue-squeezing offset press labor and setup.



### **New hybrid de-curling:**

with an advanced series of decurl rollers and humidification to condition the most challenging paper stock for smooth-running throughput.



### **1,200 dpi resolution:**

for smooth images, with enhanced outline processing for more legible text even against color backgrounds.



### **Image Density Control (IDC) sensor:**

for real-time density adjustments; accurate color density control with new density balance adjustment mode.



### **Additional productivity options:**

include large-capacity stacker unit, stacker cart, post-inserter.



### **Auto duplexing:**

with paper in weights up to 300 gsm, to produce dual-side prints and copies at blazing engine speed.



### **10,760-sheet maximum paper capacity:**

among the highest in its class. Vacuum belt feeding mechanism for handling long press runs with less operator assistance.



### Handling paper with just the right touch.

To boost your productivity, the bizhub PRESS C8000 incorporates a host of new technologies for handling substrates, improving registration accuracy and maintaining high-speed output with superior reliability.

As paper runs through your printing path, an improved registration unit automatically detects and corrects for image skew after the leading edge of the paper passes the front loop rollers. Because front and rear rollers are driven independently, paper alignment can be more accurate.

A new Hybrid Decurling function combines a series of advanced decurlers with an optional humidification system (HM-101) to provide just the right amount of moisture to the paper after printing. Uncoated stock runs more smoothly – and printed paper cools more quickly as it moves into the finishing stations.

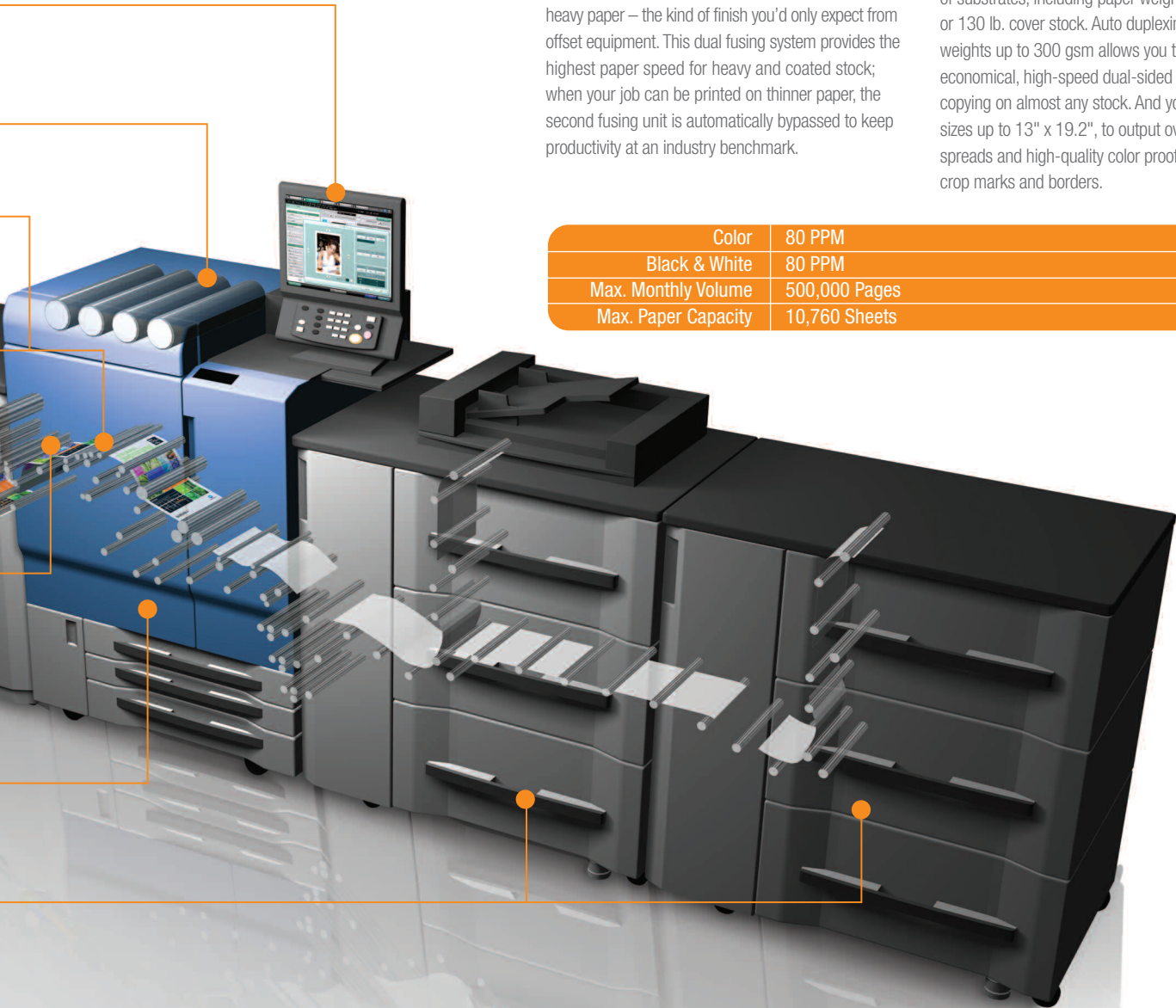
The bizhub PRESS C8000 also has a unique dual fusing system that creates a rich, brilliant finish on heavy paper – the kind of finish you'd only expect from offset equipment. This dual fusing system provides the highest paper speed for heavy and coated stock; when your job can be printed on thinner paper, the second fusing unit is automatically bypassed to keep productivity at an industry benchmark.

### Higher paper capacity in a wider range of weights and sizes.

Every print job has its own unique challenges – but they all begin with paper. So the bizhub PRESS C8000 gives you a robust monthly duty cycle of up to 500,000 impressions, to maximize output and minimize downtime.

You'll have all the media flexibility you need, including optional PF-705 or PF-704 Paper Feed Units that raise maximum paper capacity up to 10,760 sheets. That's among the highest capacities in its class, and a real time-saver for long press runs with less operator intervention. The PF-704 and PF-705 feature a new vacuum feeding mechanism for accurate and trouble-free feed of a wider range of paper – including coated stock, specialty paper and heavy paper for covers, posters, graphics or packaging.

The bizhub PRESS C8000 also handles a wider range of substrates, including paper weights up to 350 gsm or 130 lb. cover stock. Auto duplexing in paper weights up to 300 gsm allows you to perform economical, high-speed dual-sided printing and copying on almost any stock. And you can load paper sizes up to 13" x 19.2", to output oversized color spreads and high-quality color proofs that preserve crop marks and borders.



Color	80 PPM
Black & White	80 PPM
Max. Monthly Volume	500,000 Pages
Max. Paper Capacity	10,760 Sheets



CENTER-FOLD



LETTER-FOLD IN



LETTER-FOLD OUT



GATE-FOLD



DOUBLE PARALLEL



MULTI-LETTER-FOLD



Z-FOLD



MULTI CENTER-FOLD



SADDLE STITCHING



PERFECT BINDING



TRIMMING



GBC PUNCHING



ONE-SIDED PRINTING



DUPLEX PRINTING



STAPLE TRIMMING



CORNER STAPLING



2-POINT STAPLING



2-HOLE PUNCHING



3-HOLE PUNCHING



SHIFT SORTING



COVER INSERTION



SHEET INSERTION



SHEET INSERTION  
(BOOKLET)



TROLLEY STACKER



PERFECT BOUND  
STACKER

**Production power in up to 40 modular configurations.**

With open architecture design that enables finishing components to interoperate seamlessly with internal processing and command interface systems, the bizhub PRESS C8000 gives you the fast, flexible finishing capabilities you need – in modular options that help raise your output, lower your costs and increase your profitability.

A Multi-Fold Punch Unit (FD-503) provides 2-hole/3-hole punching as well as six different folding functions: center-fold, letter fold-in, letter fold-out, double parallel fold, Z-fold, and gatefold. You can also use the FD-503 for paper insertion and manual-process folding and punching of preprinted documents.

A Saddle-Stitch Unit (SD-506) lets you produce booklets up to 200 pages, with highly accurate saddle-stitching and trimming function. You'll have a choice of two Staple Finishers: FS-521, with automatic corner stapling and 2-point stapling of up to 100 sheets and in-line proportional staple cutting to provide a clean finish, and FS-612 with 80-page binding function and center-fold as well as letter-fold functions. The FS-612 also accepts its own PK-512 Punch Kit and PI-502 Post Inserter.

The powerful Perfect Binder Unit (PB-503) creates bound books up to 600 pages with in-line finishing ease. Precision paper and cover alignment performs accurate perfect binding without the necessity of three-way trimming, avoiding extra time and expense with custom-size paper. And a sophisticated GBC Punch Unit (GP-501) provides interchangeable die sets to create all the hole-punching styles your production jobs demand.

**IN-LINE FINISHING OPTIONS FOR EVERY COLOR NEED**

FAST, EFFICIENT INLINE FINISHING IS THE KEY TO ON-DEMAND COLOR PRINT PRODUCTIVITY. THE BIZHUB PRESS C8000 GIVES YOU ALL THE FINISHING OPTIONS YOU NEED, IN RIGHT-SIZE CONFIGURATIONS THAT HELP REDUCE COSTS BY MINIMIZING UNDERUTILIZED CAPABILITIES. YOU CAN CUSTOMIZE THE BIZHUB PRESS SOLUTION THAT'S A PERFECT FIT FOR YOUR NEEDS TODAY – AND ADD OPTIONS AS YOUR BUSINESS GROWS TOMORROW.

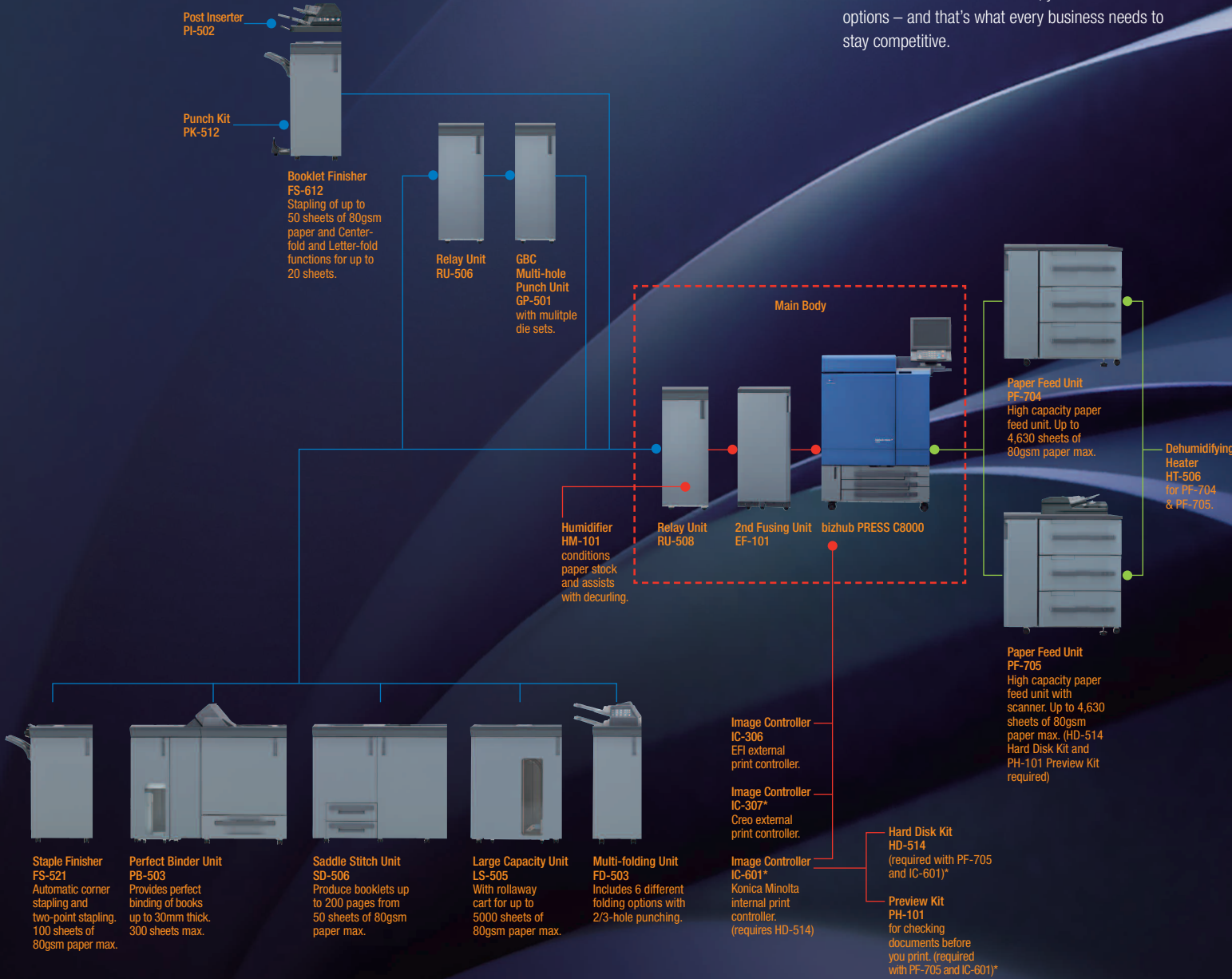




**More options to speed your print production.**

The PF-704 Paper Feed Unit and PF-705 Paper Feed Unit each provide an additional 4,630-sheet capacity. And an LS-505 Large Capacity Stacker Unit handles up to 5,000 sheet output, with rollaway cart that makes it easy to move print output to offline finishing or distribution points.

In addition, you can add a Hard Disk Kit (HD-514) to your system for on-board document storage. With the bizhub PRESS C8000, you'll have all the options – and that's what every business needs to stay competitive.



\* The IC-307 and the IC-601 are not available at time of launch. The above diagram of options is for reference only, and is not intended as an actual configuration. Please consult your Konica Minolta sales representative for a complete list of accurate configuration options.



## TOTAL CONTROL OF YOUR COLOR PRINT PRODUCTION

FOR PROFITABLE PRODUCTION PRINTING, YOU NEED CONTROL. IN ADDITION TO SUPERIOR IMAGE QUALITY AND HIGH-SPEED PERFORMANCE, THE BIZHUB PRESS C8000 PROVIDES A POWERFUL RANGE OF COLOR PRINT MANAGEMENT CAPABILITIES IN THREE SOPHISTICATED IMAGE CONTROL OPTIONS\* – GIVING YOU THE RIGHT CHOICE FOR THE NEEDS OF YOUR PRINT SHOP, YOUR CLIENTS AND YOUR BOTTOM LINE.

### It all begins with a simple touch.

The on-board color LCD touch-panel of the bizhub PRESS C8000 provides a winning combination of control plus convenience – because you don't have to leave your printer to perform the command functions that make your work more productive.

Its large 15" area gives you plenty of room to control job queues, select finishing options, navigate simple menus – and get a large-screen look at thumbnail displays that let you preview pages before you print, make changes and see your results immediately, and fine-tune color without wasting paper on test printouts (IC-601 only). Your touch-panel display can also be mounted anywhere on the top of your bizhub PRESS C8000.

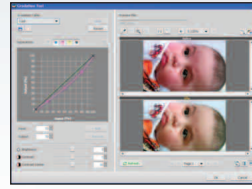
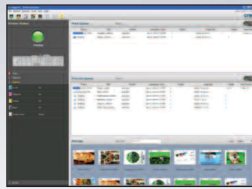


### The IC-306 Fiery Image Controller.

First choice of a wide range of professional applications, EFI's state of the art External Fiery® Image Controller is immediately available for the bizhub PRESS C8000 – and brings you the upgraded functions of Fiery System 9 as well as Fiery Driver 4.0 for both Windows and Mac environments.

Improved features of the IC-306 include Command WorkStation 5 interface with sophisticated color management tools, SeeQuence Suite combines impose, compose and preview in one procedure, variable data printing support, hot folders, job batching, and various ways to speed printing by using available paper, printing samples from a different paper tray, removing unused tab paper and more.

The IC-306 also provides 2 GB of memory, Windows 7 and Windows Vista drivers, PostScript Level 3 support, PDF scan per page and PDF scan with password.



### Two more powerful color control options.

The bizhub PRESS C8000 accommodates two more print control options to give you even greater production power and control flexibility.

The Creo® IC-307 External Print Controller features advanced spot color profiling, a complete Pantone GOE library, Office Hot Folder to print documents more quickly from remote locations, Remote Site Manager status tracking, JDF connectivity, Creo job ticket software and much more.

And the new Konica Minolta IC-601 Internal Print Controller brings powerful workflow benefits within reach of more print-for-pay and commercial printing applications – including 1,200 dpi printing at full rated engine speed, high-speed RIP processing, enhanced accuracy in color reproduction, new color management functions and full compatibility with bizhub PRESS C8000 on-board job control and editing functions.

The IC-601 also supports Konica Minolta's PageScope® software, for interactive, cost-effective control of documents and individual print devices – as well as the Printgroove Print-on-Demand Suite, combining multiple print management, workflow and job ticketing functions that give you automated control of your entire production floor.

### Konica Minolta: a world leader in digital production technology.

Konica Minolta has over 37,000 worldwide employees, cutting-edge research programs in digital and optical technology, and the industry's most complete line of document imaging solutions from desktop to print shop. Our bizhub PRESS C8000 was recognized as "Best of Show 2010" in color digital printing equipment by InfoTrends at the On Demand Conference and Exposition.

Professionals who use our equipment know they can count on Konica Minolta for value, reliability and performance – along with industry-leading service and support. And our corporate, commercial and print-for-pay customers recognize Konica Minolta's unsurpassed digital color quality.

We're proud of this record of achievement – and we've worked hard to earn our place on your production floor.



\*IC-307 and IC-601 not available at time of launch. Some functions available only with Konica Minolta IC-601.

# bizhub PRESS C8000

HIGH-SPEED COLOR PRODUCTION PRINTER



## GENERAL SPECIFICATIONS

Type	Console Type
Print / Copy Process	8 Beam Laser System with Quad OPC Drum Tandem Electrostatic Process
Development System	Dry Dual Component Magnetic Brush Development
Print Speed / Monthly Duty Cycle	80ppm (Color and B&W) / 500,000 pages
Resolution / Gradation	1200 x 1200 dpi / 256, 8-bit CMYK
Standard / Optional Memory	512MB x 6 Standard <span style="float: right;">• 160GB x 6 Optional</span>
Warm-up Time	Approx. 6.5 minutes
Copy Quantity	1-9,999 ( Countdown, Interrupt Capability)
Magnification	Zoom Range: 25%-400%
Original Size	Reversing Duplexing Document Feeder: up to 11" x 17" Maximum / 100 Sheets / Mixed Original Detection (PF-705 only)
Paper Size / Paper Weight	All trays: up to 13" x 19.2" maximum / up to 300 gsm; PF-704 and PF-705: up to 350 gsm
Standard / Optional Paper Supply	500-Sheet Universal Paper Drawers x 3 <span style="float: right;">• 4,630-Sheet Paper Feed Unit x 2 (PF-704/PF-705)</span>
Maximum Paper Capacity	10,760 Sheets Maximum
Power Requirements (Engine)	208V-240V, 60Hz, 24 AMP Dedicated Line
Dimensions (W x D x H) / Weight	35.4" x 37.4" x 52" (Engine only) / 990 lbs. (Engine only)
Available Functions	Auto Zoom, Auto Paper Select, Auto Low Power, Auto Reset, Auto Shut Off, Color Mode, Combine Originals, Copy Density, Cover Sheet Feeding, Custom Size Paper Setting, Folding, Frame Center Erase, Image Centering, Image Repeat, Interrupt Copying, Job List, Manual Shutoff, Mode Memory, Non Image Area Erase, Page Margin, Power Save, Proof Copy, Remote Monitor, Reserve Job, Rotation, Separate Scan Mode, Simplex/Duplex, Stamp, Staple, Tab Paper, Trimming, Weekly Timer, Z-Folded Original Setting, Zoom
• Available Options	FS-612 Booklet Finisher, PK-512 Punch Kit (for FS-612), PI-502 Post Inserter (for FS-612), FD-503 Multi-Folding Unit (post-insert and punch ability), SD-506 Saddle-Stitch Unit, LC-501 Rollaway Cart (for LS-505), LS-505 Large Capacity Stack, FS-521 100-sheet Staple Finisher, PB-503 Perfect Binder Unit, RU-508 Relay Unit, HM-101 Decurling Humidifier Unit, GP-501 GBC Mult-Hole Punch Unit (6 available Die Sets: DS-501 3-hole Punch Die, DS-502 19-hole Cerlox Punch Die, DS-503 32-hole Wirebind Punch Die, DS-504 21-hole Wirebind Punch Die, DS-505 44-hole Color Coil Punch Die, DS-506 11-hole Velobind Punch Die), RU-506 Relay Unit (for GP-501), PF-704 Paper Feed Unit (2 Trays: 1,390 Sheets/1 Tray: 1,850 Sheets), PF-705 Paper Feed Unit w/ ADF (2 Trays: 1,390 Sheets/1 Tray: 1,850 Sheets), EF-101 2nd Fusing Unit, HD-514 HDD Unit (for PF-705/IC-601), HT-506 Dehumidifier Heater (for PFU), PH-101 Preview Kit
• IC-306 EXTERNAL FIERY IMAGE CONTROLLER (OPTIONAL)	
Operating System / Processor / Memory	Windows XP Pro FES / Intel® Core™ 2 Quad Q9400 2.66 GHz Processors / 2GB RAM
Hard Disk Drive / DVD Drive	160GB HDD / Internal DVD-RW Drive
Software	Fiery System 9
Networking Connectivity	Simultaneous Auto Switching Protocols, EtherTalk II, TCP/IP, Novell IPX iPrint, LDAP Support (Exchange, Novell, Domino, LDAPv3/RFC2251, Email Address Access and Authentication) User Password Validation, Certificate Management (SSL/TLS, X509 Standard), IP Sec Support, IPv6 Support
File Format Support	Adobe® Postscript® Level 1, 2, 3, Adobe PDF 1.5 to 1.7 (Adobe Acrobat® 6 to 9), PDF/X-1a, 3 and 4, Encapsulated PostScript (EPS), MS Office (DOC, XLS, PPT, PUB (via Hot Folders)
• Optional File Format Support	JPEG, DCS 2.0, CT/LW, 1-bit TIFF, TIFF, TIFF/IT, PDF2Go
SNMP Printing Support	AppleTalk, Bonjour, SMB (peer-to-peer), LPD
Performance Features	Fiery Smart RIP, RIP-While-Print, RIP 1-While-Print 2, Fiery RIPChips™, EFI Video Interface Card, ECT Compression (for flexible compression ratios and visually lossless image quality)
Fiery Utilities	Fiery Driver, Fiery Command WorkStation 5, Fiery WebTools™, Fiery Hot Folders
• Fiery Options	Fiery Seequence Suite, Fiery Seequence Impose, Fiery Seequence Compose, Fiery Graphic Arts Package (Premium Edition), Fiery Graphic Arts Package, ES-1000 Spectrophotometer, Fiery Color Profiler Suite, Removable Hard Disk Drive, Fiery Integrated Workstation: Fiery Stand, GUI Kit (19" Display, Keyboard, Mouse), UK-102 USB Upgrade Kit
• Optional Variable Data Handling	Fiery FreeForm™, PPML v2.2 (PDI certified), Creo VPS Compatible, Optimized PostScript® and Optimized PDF
Power Supply	90-135VAC @ 47-63Hz, 6A @ 115VAC
Dimensions (W x H x D)	8.3" x 19.2" x 19"
• IC-307 EXTERNAL CREO IMAGE CONTROLLER (OPTIONAL)*	
Operating System / Processor / Memory	Windows XP Professional Edition Embedded / Intel Core i7-860 3.46 GHz, 8MB, Turbo Boost / 5GB RAM (System: 2GB, Image: 3GB)
Hard Disk Drive / DVD Drive	1.5TB (System and User: 500GB, Image: 1TB) / DVD R/W
Standard Hardware	Keyboard, Mouse and 19" Monitor
• Optional Hardware	Creo Color Server product stand, X-Rite i1 Spectrophotometer, UK-103 USB Upgrade Kit
Software Support	Adobe Acrobat 9.0 Standard, Enfocore, PitStop Acrobat Plug-in Lite Version 8
Networking Connectivity	Ethernet 1000BASE-T/100BASE-TX/10BASE-T, TCP/IP, IPv4/IPv6, NetBEUI, AppleShare (File Sharing), PAP (File Printing), NetBIOS, 802.1x Authentication,
Page Description Language	PS, EPS, PDF1.8 (CPSI 3017), TIFF, JPEG (excluding progressive JPEG and JPEG2000), IPDS (Transaction Power Kit only)
Hybrid Workflow	PDF/X-1a, JDF1.3
Variable Data Handling	PPML 2.2, VPS (Creo Variable Print Specification 1.5)
Supported Print Standards	PDFL 9, ICC v4, Pantone GOE, FograCert, Adobe PDF Print Engine (APPE) 2, via a special software update
New Functions	Destination Profiles to Spot Colors, Pantone GOE Library, Color Sets, Print Color Sets, Office Hot Folder Tool, Remote Site Manager, JDF 1.3 connectivity Creo Color Server Job Ticket Software, Bi-directional Integration with Kodak Prinergy and Agfa Apogee, Easy VDP (Variable Data Printing) file Creator, Improved Perfect Binder Support
• Optional Power Kits	Professional Power Kit, Process Power Kit, Imposition Power Kit, Transaction Power Kit
Power Supply	100-127VAC @ 50-60Hz, 2A @ 100-127VAC
Dimensions (W x H x D)	7.1" x 17.5" x 21.9"
• IC-601 KONICA MINOLTA IMAGE CONTROLLER (OPTIONAL)*	
System Version / Operating System	Konica Minolta 2.0 / TimeSys Linux 6.1
Processor / Memory / Hard Disk Drive	Intel® Core™ 2 Duo 2.8 GHz Processor / 4GB RAM / SATA: 500GB (250GB x 2), SSD: 2GB (Controller system stored)
Engine I/F	Serial 768kbps, C8000 Video Clock (Print): 76.068MHz
Page Description Language / PDF Support	Adobe Postscript 3™, CPSI 3019, TIFF, PCL5c/6, XPS / PDF v1.7, PDF/X-1a, PDF/X-3
Variable Data Handling	PPML 2.1
Font Support	Adobe Roman 136 fonts, PCL 81 fonts
OS Support (Software)	Windows 2000, Windows XP, Windows Vista, Windows 2003 Server: PS (PPD, Visual), Windows Server 2008 7: PS (PPD, Visual), XPS, Mac OS X 10.4-10.6: PDE (Visual)
Applications	PageScope Direct Print, PageScope EMS Plug-in, PageScope Web Connection, PageScope Account Manager, PageScope Net Care Device Manager, Net Backup Tool, Font Management Utility, Print Status Notifier, Print Utility for UNIX, JobCentro (Job Control/Editing Utility), ColorCentro (Color Management Utility), Printgroove POD QUEUE
Power Supply	100-240V, 50-60Hz

• OPTIONAL    ● STANDARD

\*IC-307 and IC-601 not available at time of launch. Some functions available only with Konica Minolta IC-601.

Konica Minolta Optimized Print Services offers a full suite of device output services and workflow solutions that increase efficiency and control costs. Please contact your authorized Konica Minolta sales representative for details.

© 2010 KONICA MINOLTA BUSINESS SOLUTIONS U.S.A., INC. All rights reserved. Reproduction in whole or in part without written permission is prohibited. Konica Minolta is a registered trademark of KONICA MINOLTA HOLDINGS, INC. bizhub and PageScope are trademarks of KONICA MINOLTA BUSINESS TECHNOLOGIES, INC. Simitri is a registered trademark of KONICA MINOLTA BUSINESS SOLUTIONS. Fiery is a trademark of EFI. Creo is a trademark of Creo. All other brands and product names are registered trademarks or trademarks of their respective owners. Design & specifications are subject to change without notice. Some functions may require options, which may or may not be available at time of launch.



Item #: C8000BRO  
6/15/11



KONICA MINOLTA BUSINESS SOLUTIONS U.S.A., INC.  
100 Williams Drive  
Ramsey, NJ 07446  
www.CountOnKonicaMinolta.com  
www.kmbs.konicaminolta.us